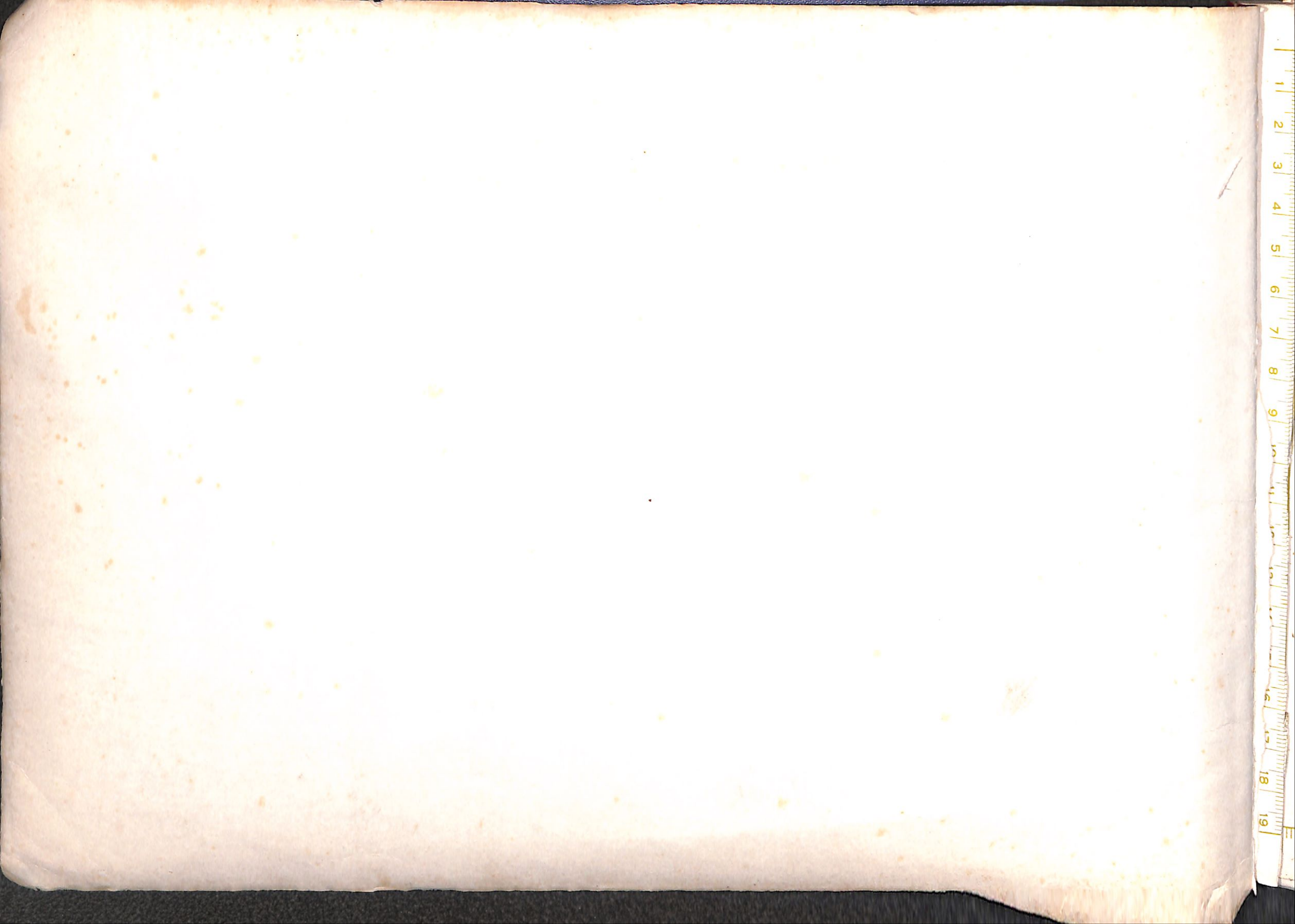




Cartografía

Milimetrado

CADERFLEX



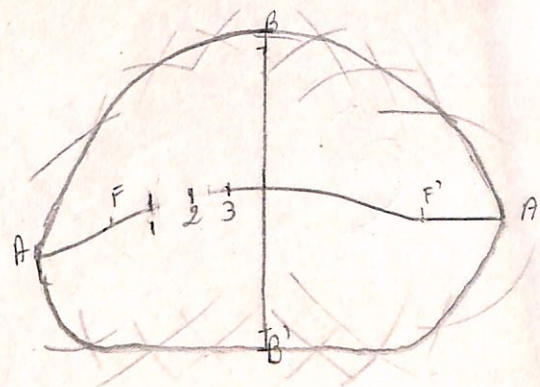
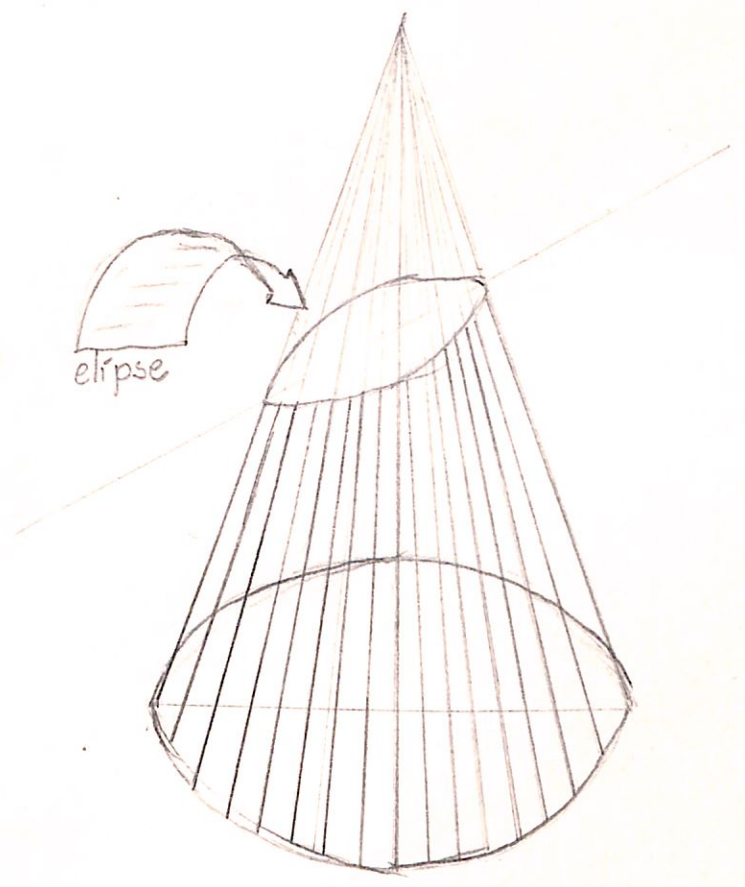
Elipse e aplicação em desenhos à mão livre

- Chama-se elipse a curva cônica gerada pela secção de um cone de revolução, quando o plano seccionador está oblíquo à base, seccionando todas as geratrizes.

Elipse é a curva cônica plana, fechada, sem começo nem fim, cujos pontos estão em relação com dois pontos interiores situados sobre o eixo maior equidistantes do centro ou pólo, chamados focos. Essa relação está representada pela equação $PF + PF' = AA' = 2a$, isto é, qualquer ponto da elipse (P), ligado aos focos (F e F') determina 2 segmentos retilíneos chamados raios vetores e que somados medem sempre o comprimento do eixo maior (AA' ou $2a$)

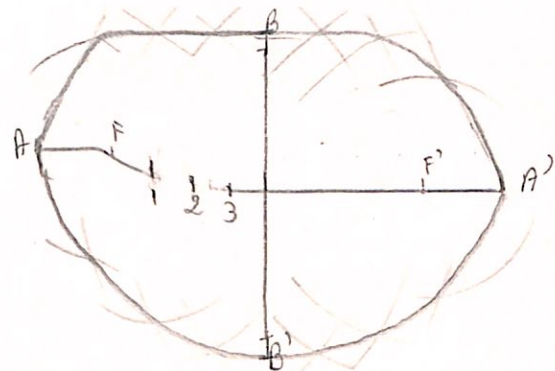
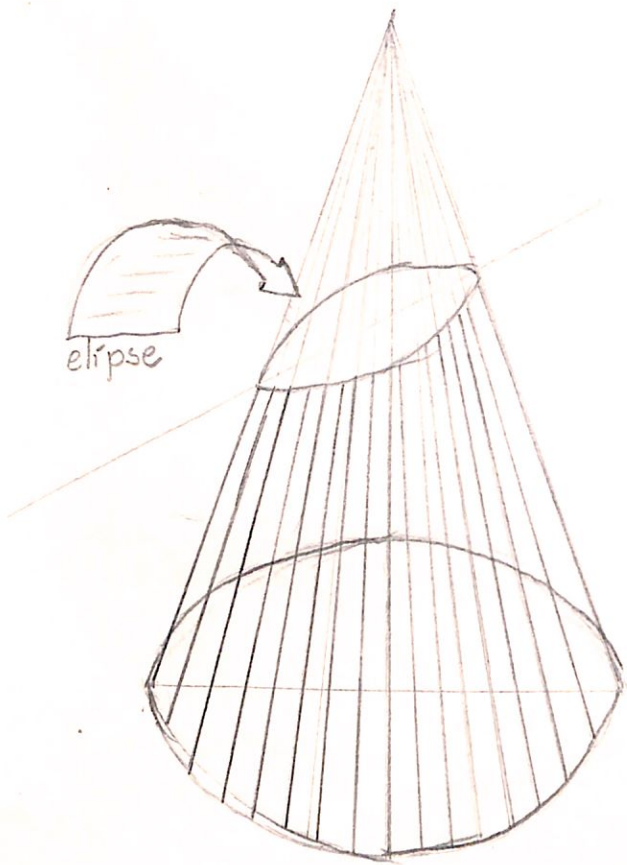
Elementos da Elipse eixo maior AA' ou $2a$; eixo menor BB' ou $2b$; distância focal FF'; semi-eixo maior $= a$; semi-eixo menor $= b$; semi-distância focal $= c$; $a^2 = b^2 + c^2$

Ainda são elementos da elipse: parâmetro, cordas, secantes, tangentes, raios vetores e círculos principais e círculos diretores.



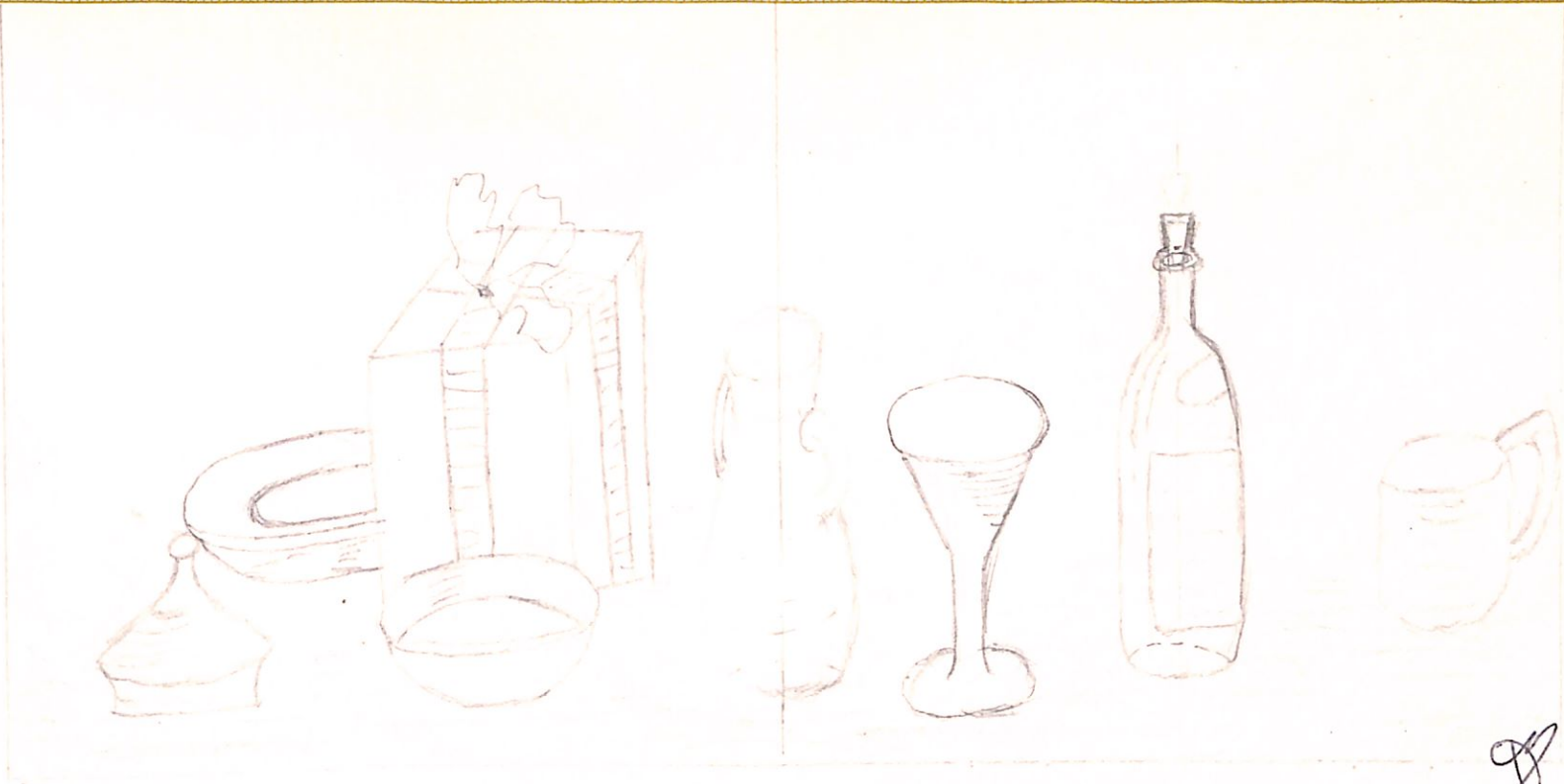
Q





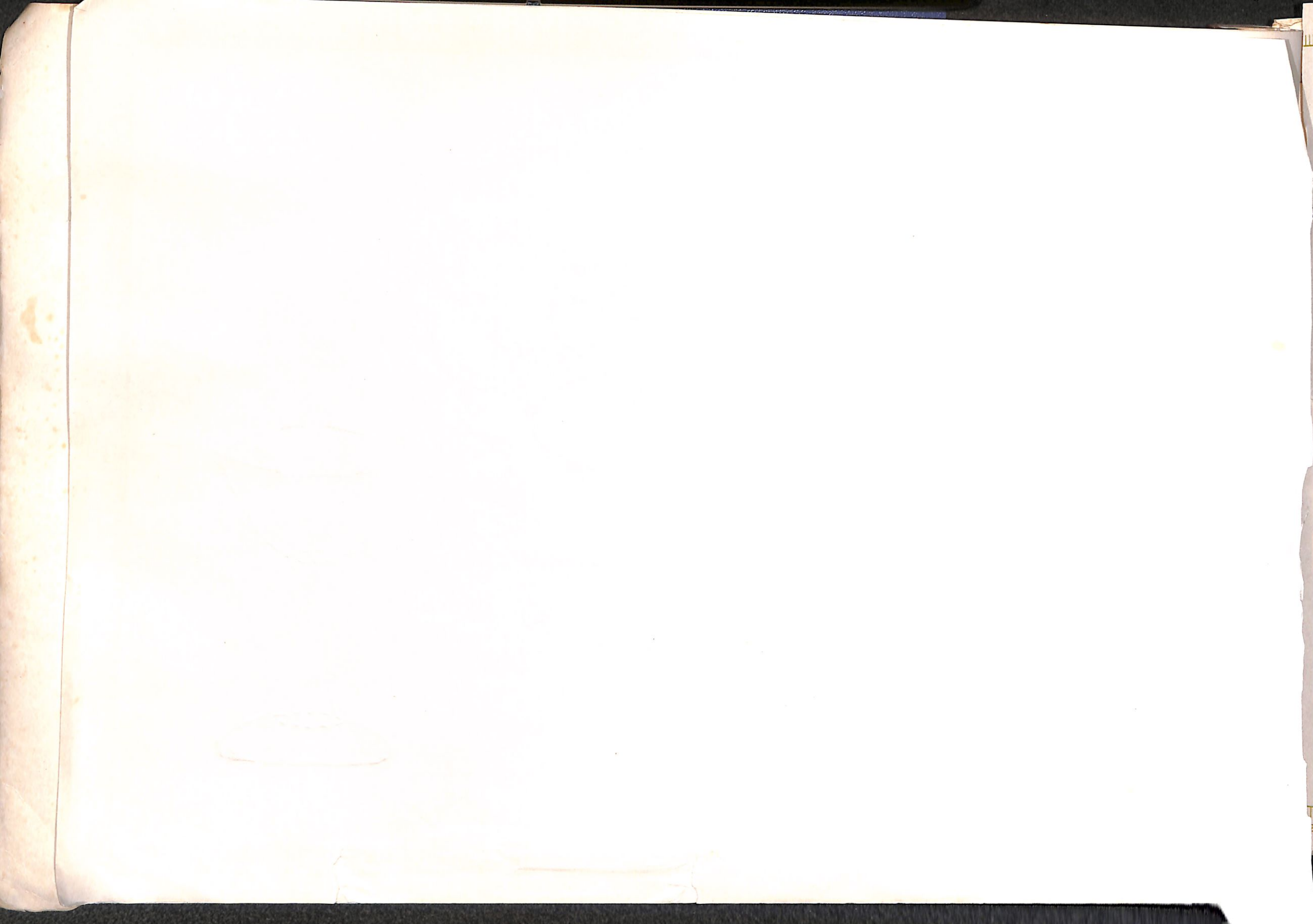
Handwritten signature or mark.





[Handwritten signature]





1 2 3 4 5 6 7 8 9 10 11 12 13 14 15 16 17 18 19 20 21 22 23 24 25 26 27 28

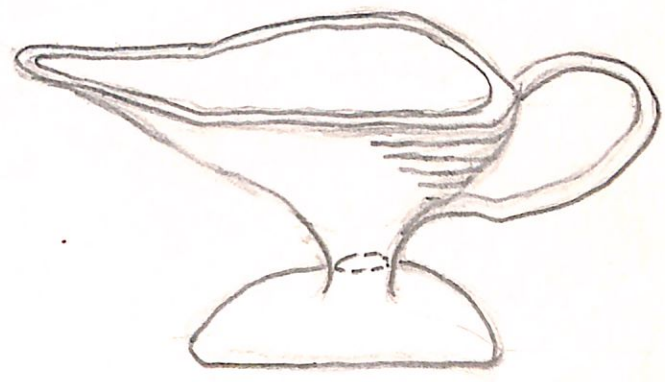
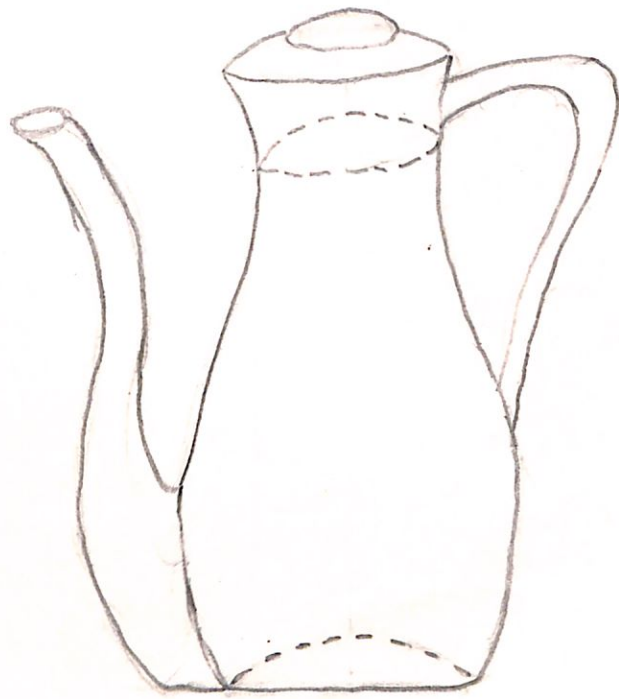
1
2
3
4
5
6
7
8
9
10
11
12
13
14
15
16
17
18
19



[Handwritten signature]

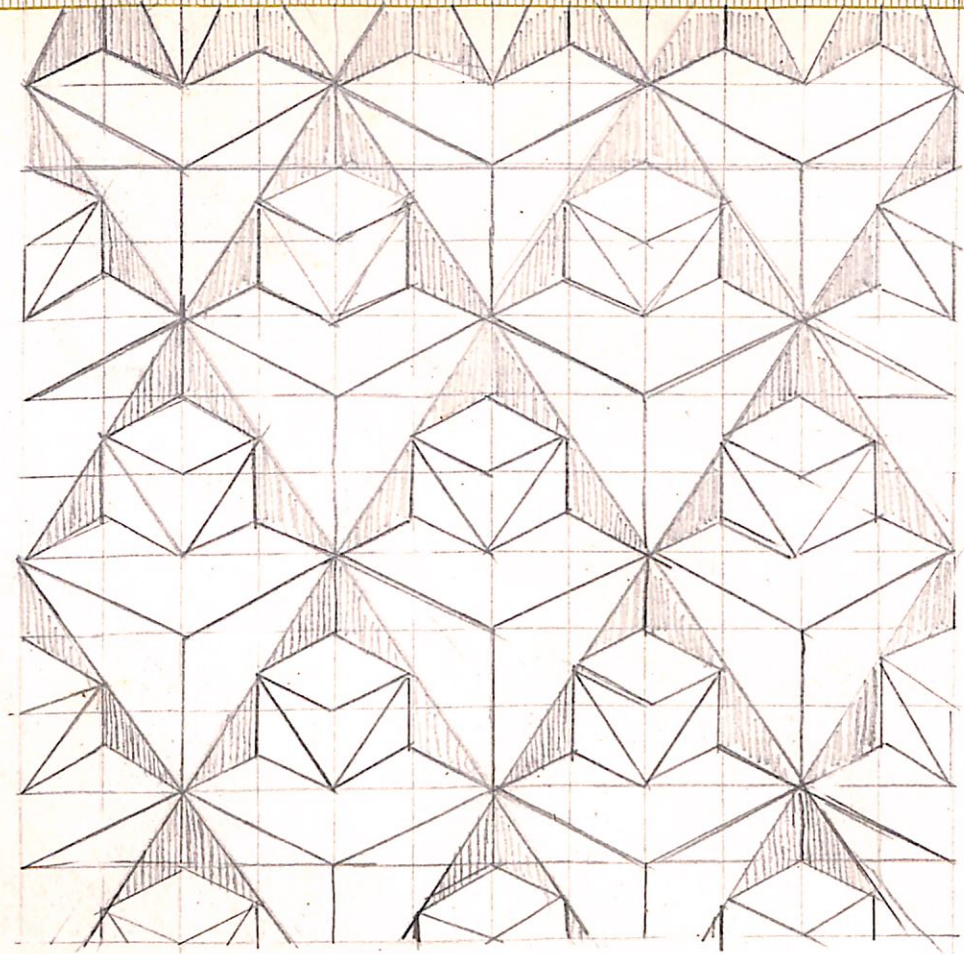
1 2 3 4 5 6 7 8 9 10 11 12 13 14 15 16 17 18 19 20 21 22 23 24 25 26 27 28







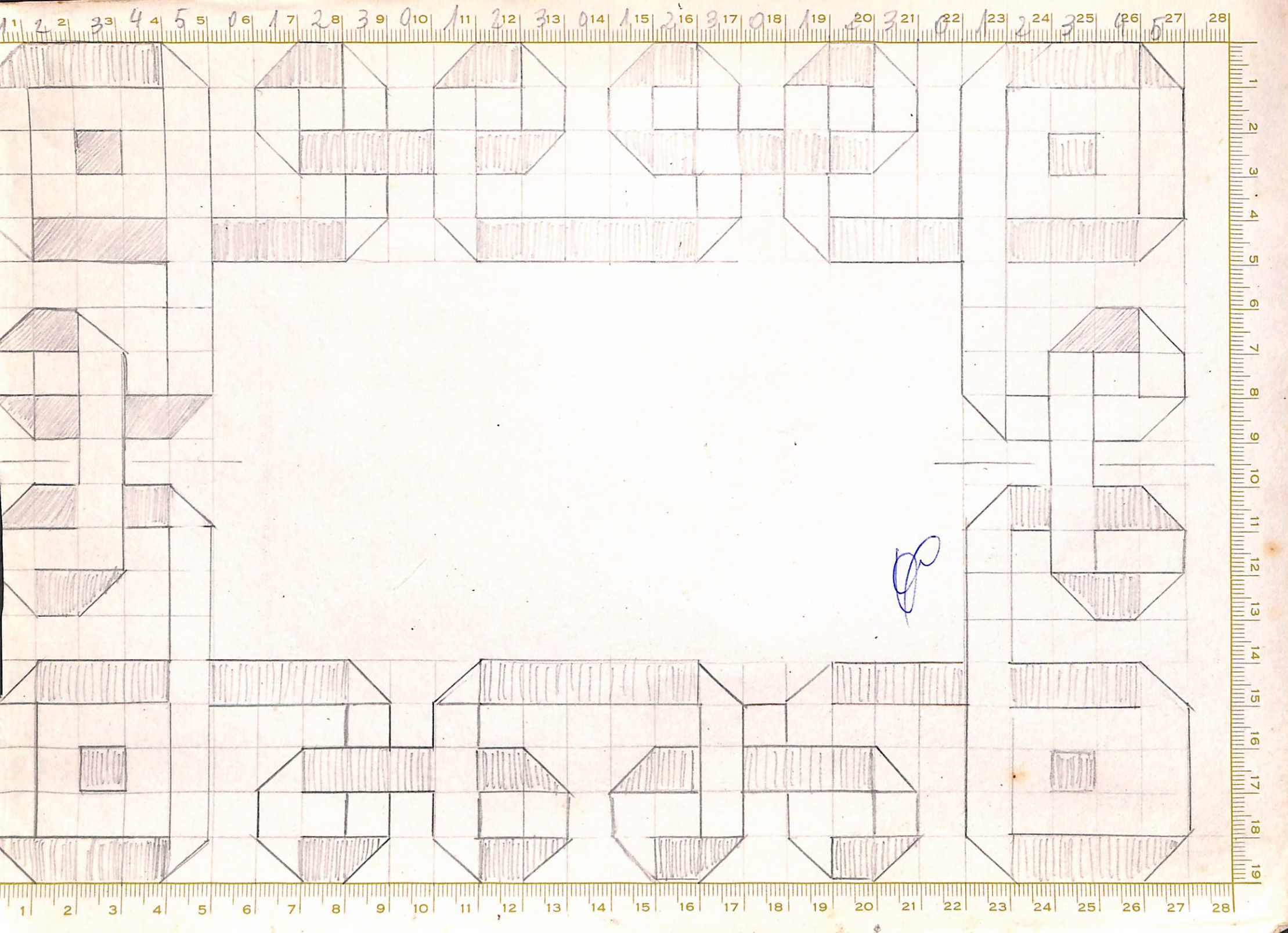
1 2 3 4 5 6 7 8 9 10 11 12 13 14 15 16 17 18 19 20 21 22 23 24 25 26 27 28

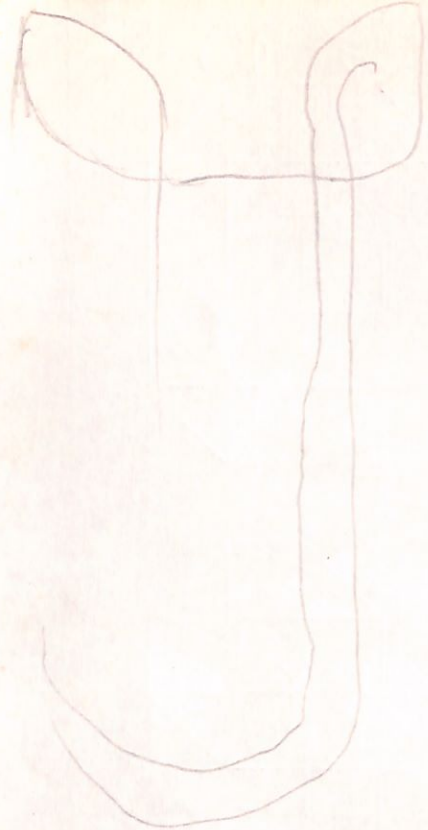


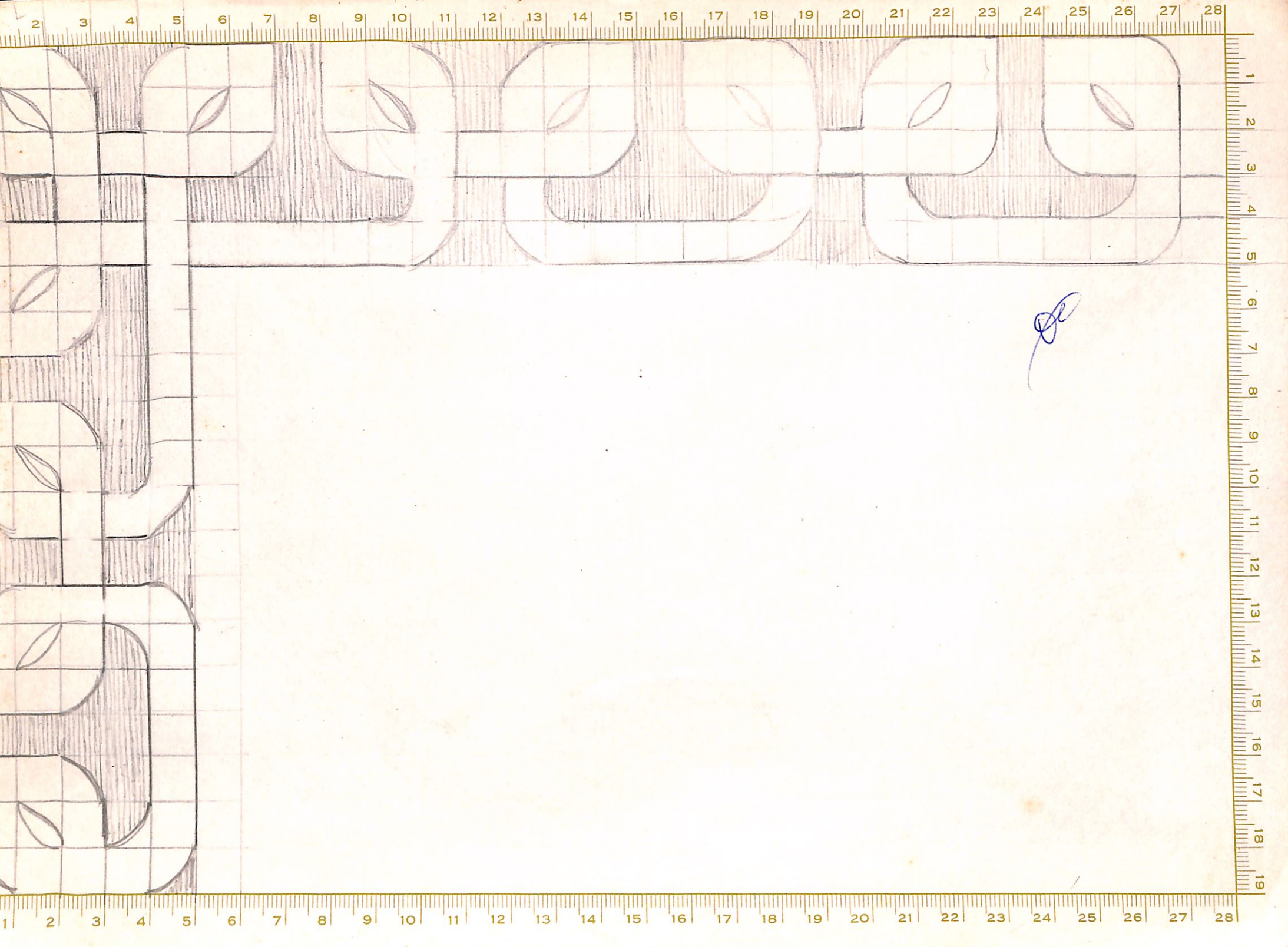
oo

1
2
3
4
5
6
7
8
9
10
11
12
13
14
15
16
17
18
19

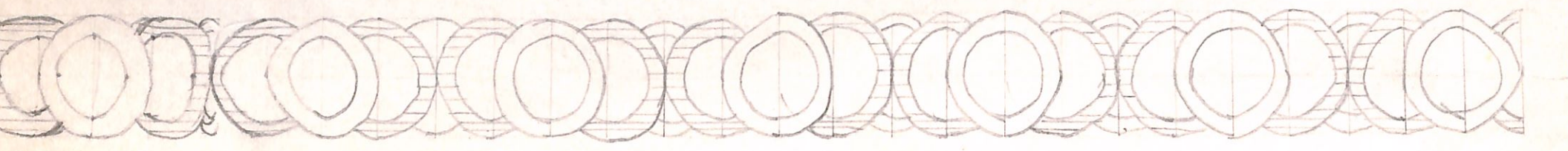
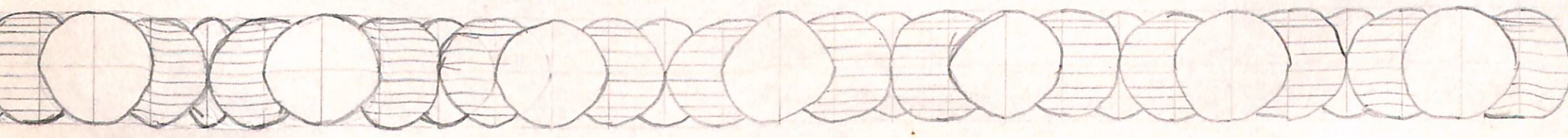
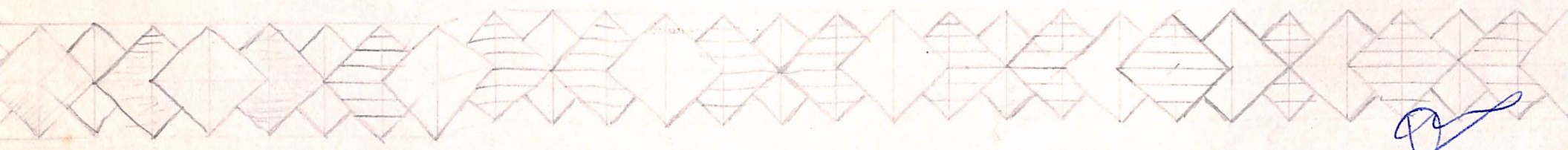
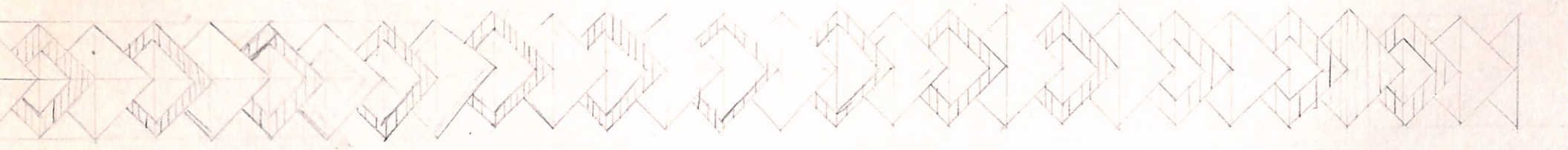
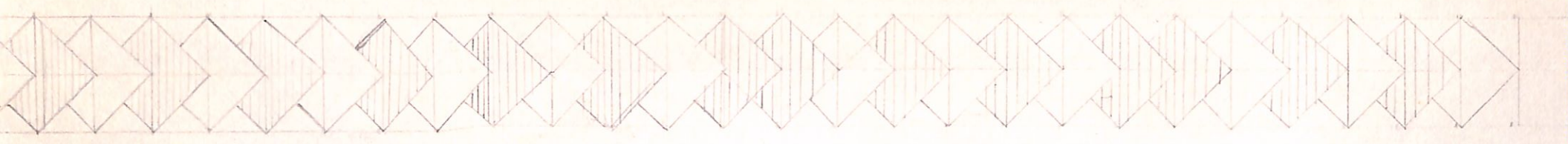
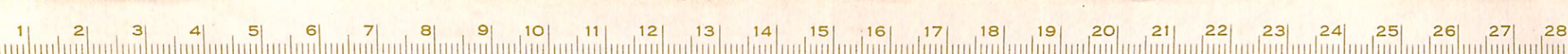
1 2 3 4 5 6 7 8 9 10 11 12 13 14 15 16 17 18 19 20 21 22 23 24 25 26 27 28















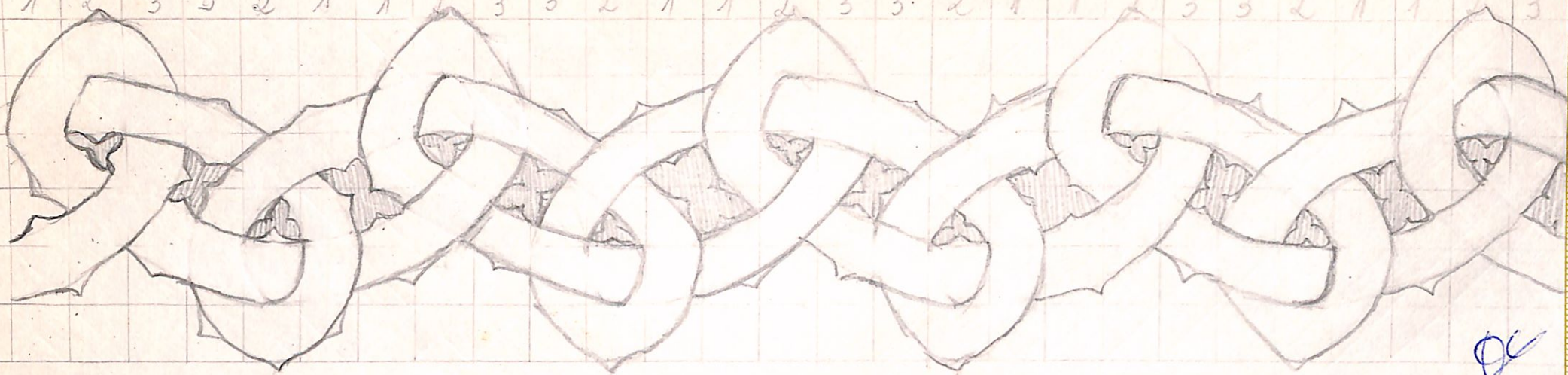




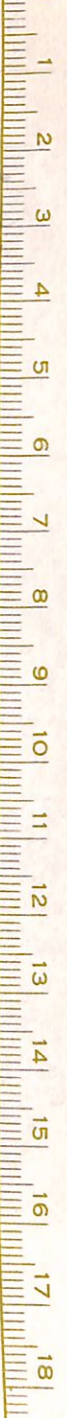
Friso com aplicação de peças curvas
e interligadas



1 2 3 3 2 1 1 2 3 3 2 1 1 2 3 3 2 1 1 2 3

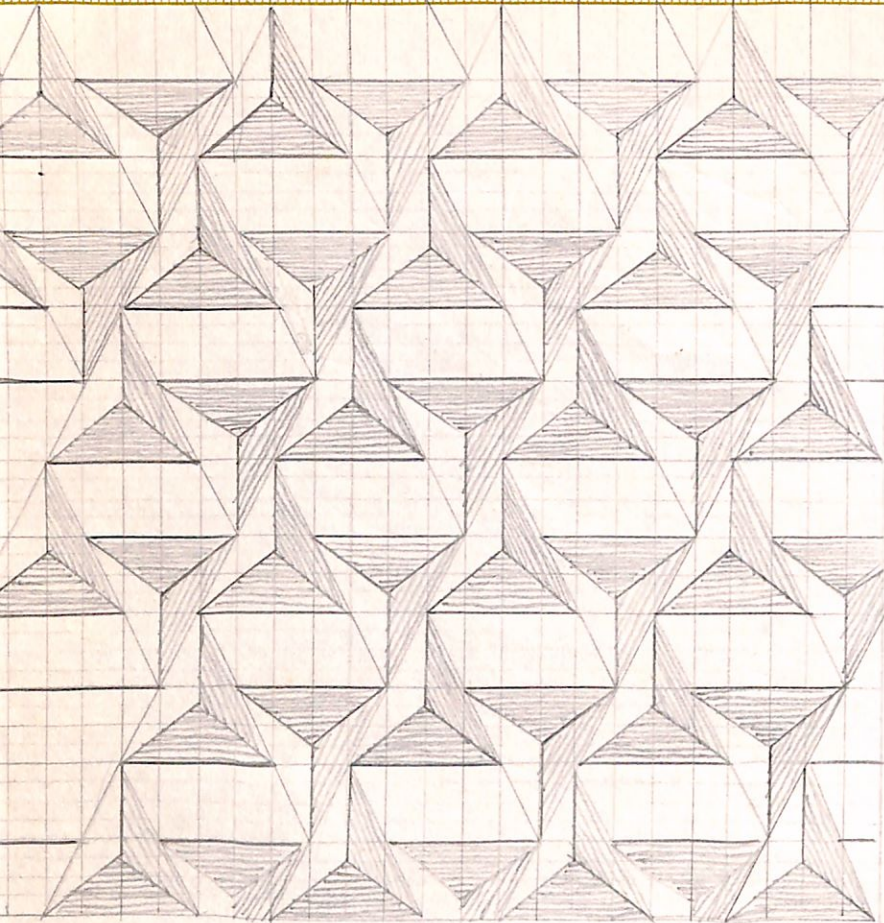


OC





1 2 3 4 5 6 7 8 9 10 11 12 13 14 15 16 17 18 19 20 21 22 23 24 25 26 27 28



1
2
3
4
5
6
7
8
9
10

1
2
3
4
5
6
7
8
9
10
11
12
13
14
15
16
17
18

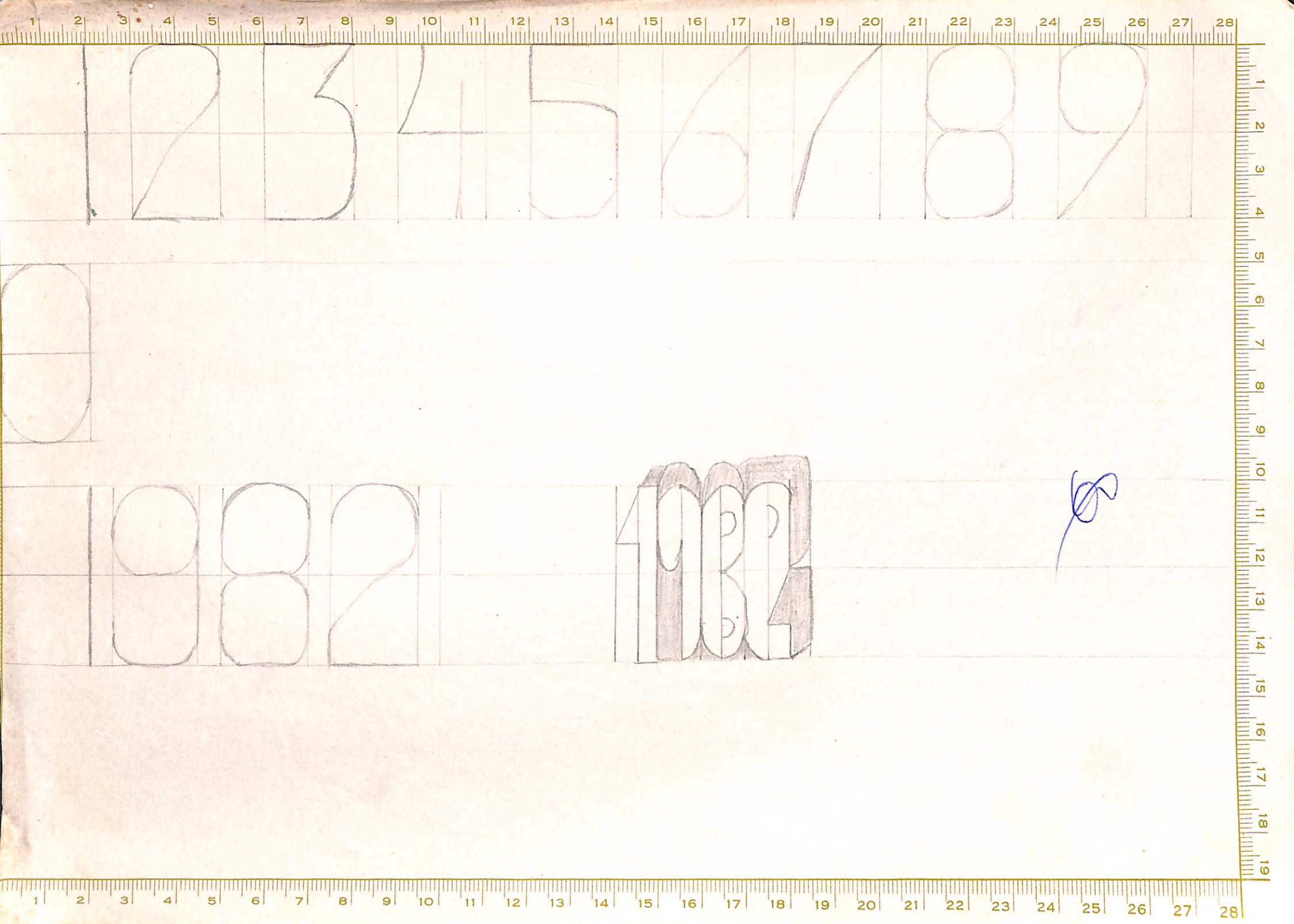
antologia única

João Hill

CURITIBA

30-3-1982

[Handwritten signature]



1

2

3

4

5

6

7

8

9

0

10

11

12

13

14

scribble



A B C D E F G H I J

K L M N O P Q R S

T U V W X Y Z

[Blue scribble]

1 2 3 4 5 6 7 8 9 10 11 12 13 14 15 16 17 18 19 20 21 22 23 24 25 26 27 28

a b c d e f g h i j k l m n

o p q r s t u v w x y z

aa aat e



1 2 3 4 5 6 7 8 9 10 11 12 13 14 15 16 17 18 19

1 2 3 4 5 6 7 8 9 10 11 12 13 14 15 16 17 18 19 20 21 22 23 24 25 26 27 28

1967



Handwritten cursive letters: a, o, e, g, n, u, r

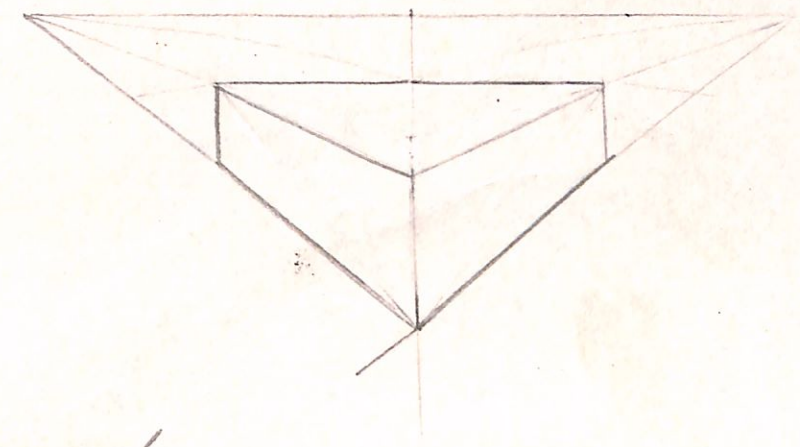
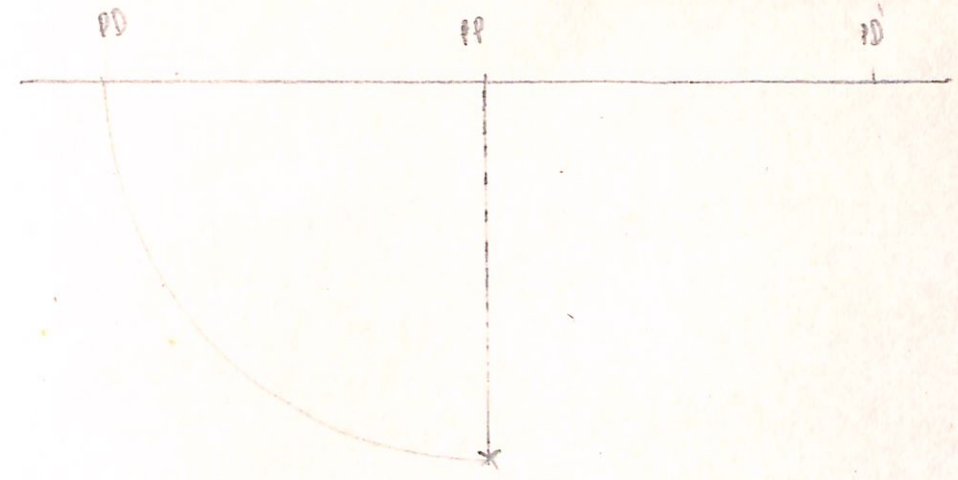
Handwritten cursive letters: m, p, o, r, s, t, u, v

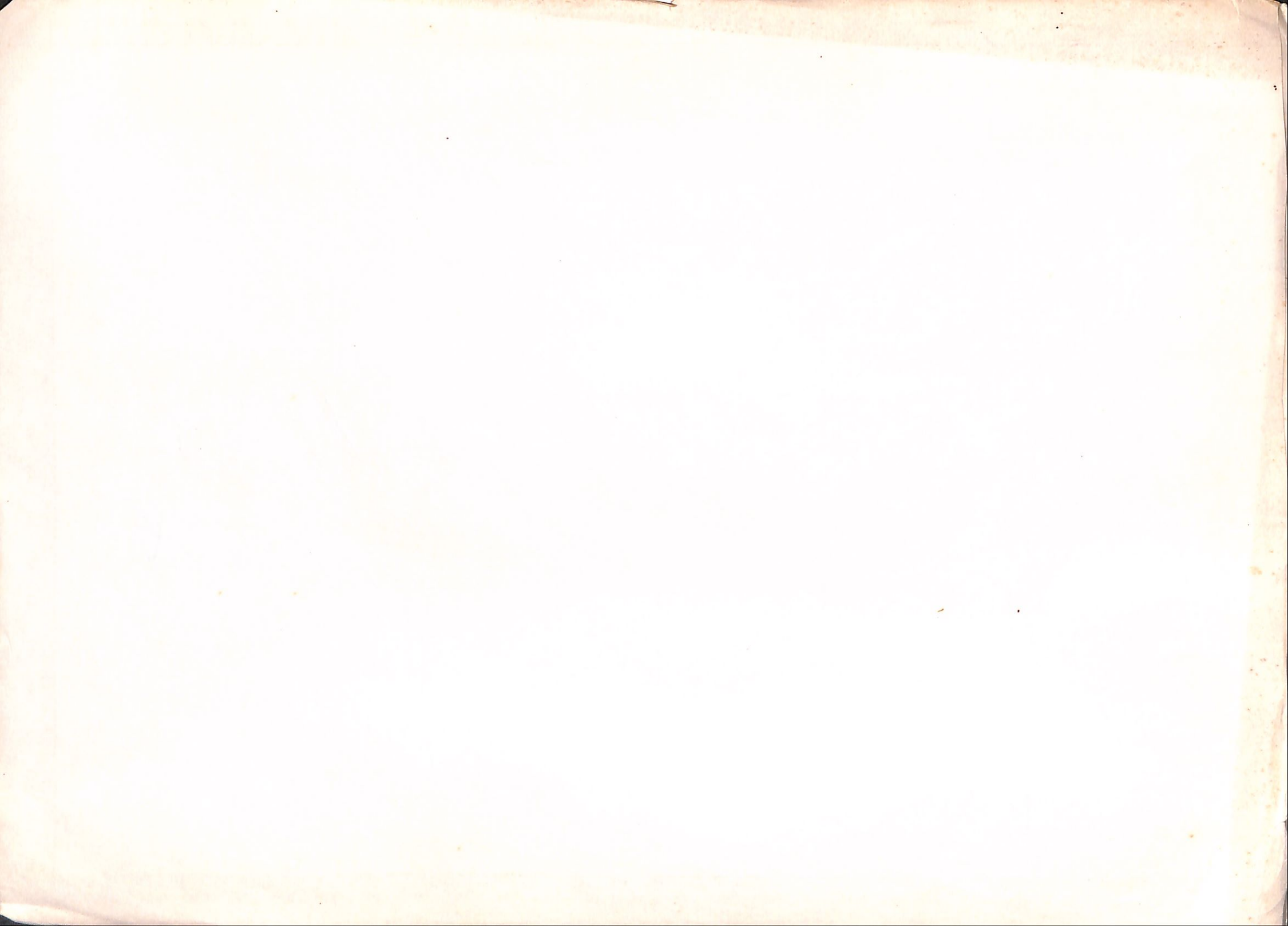
Handwritten blue flourish or signature mark.

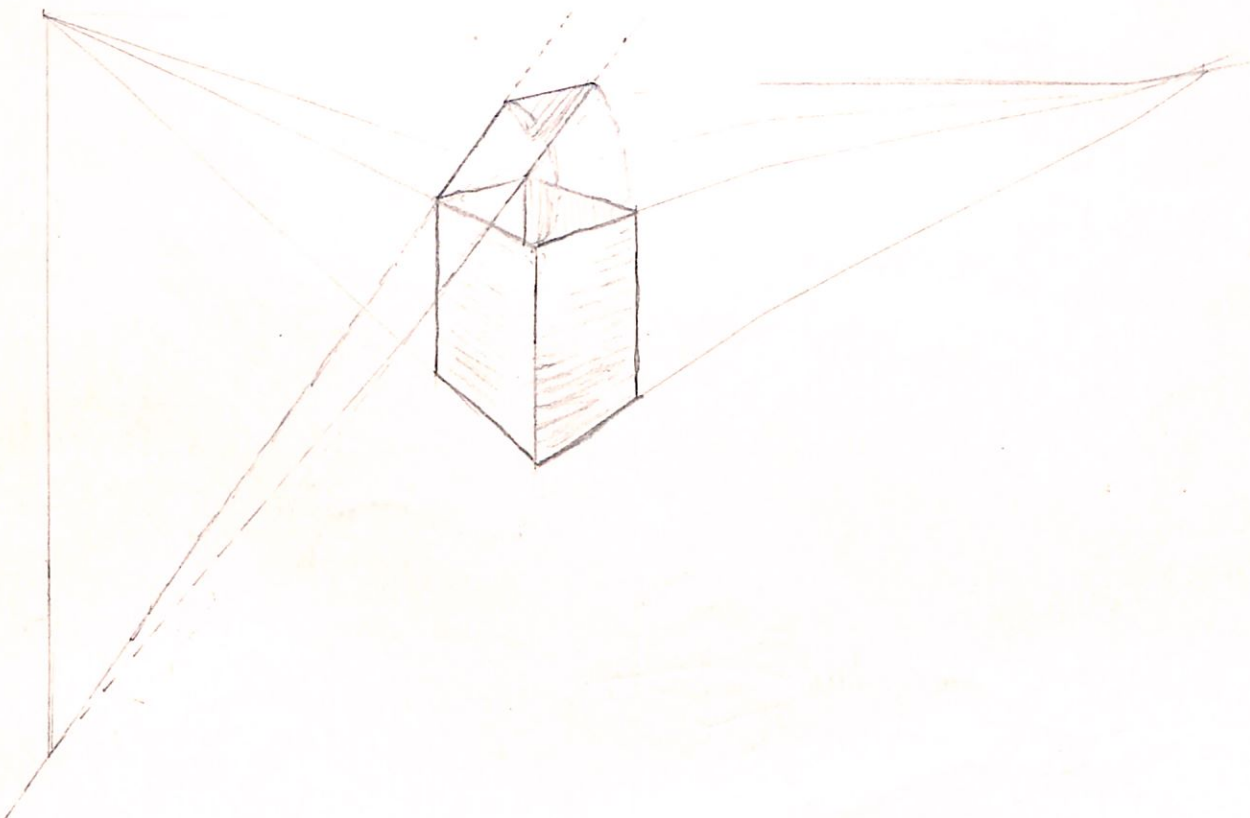
Handwritten cursive letters: s, y, z

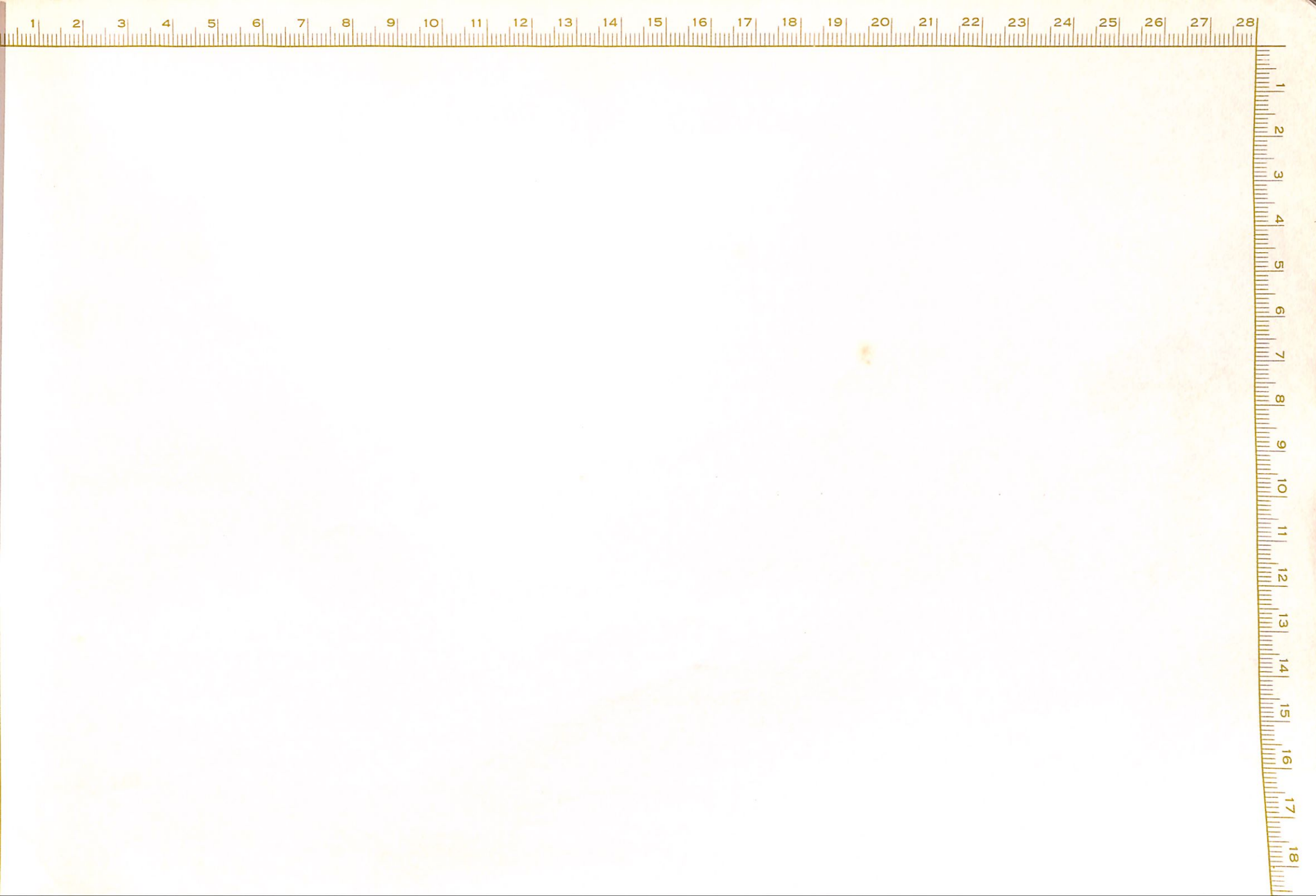


Perspectiva de observação

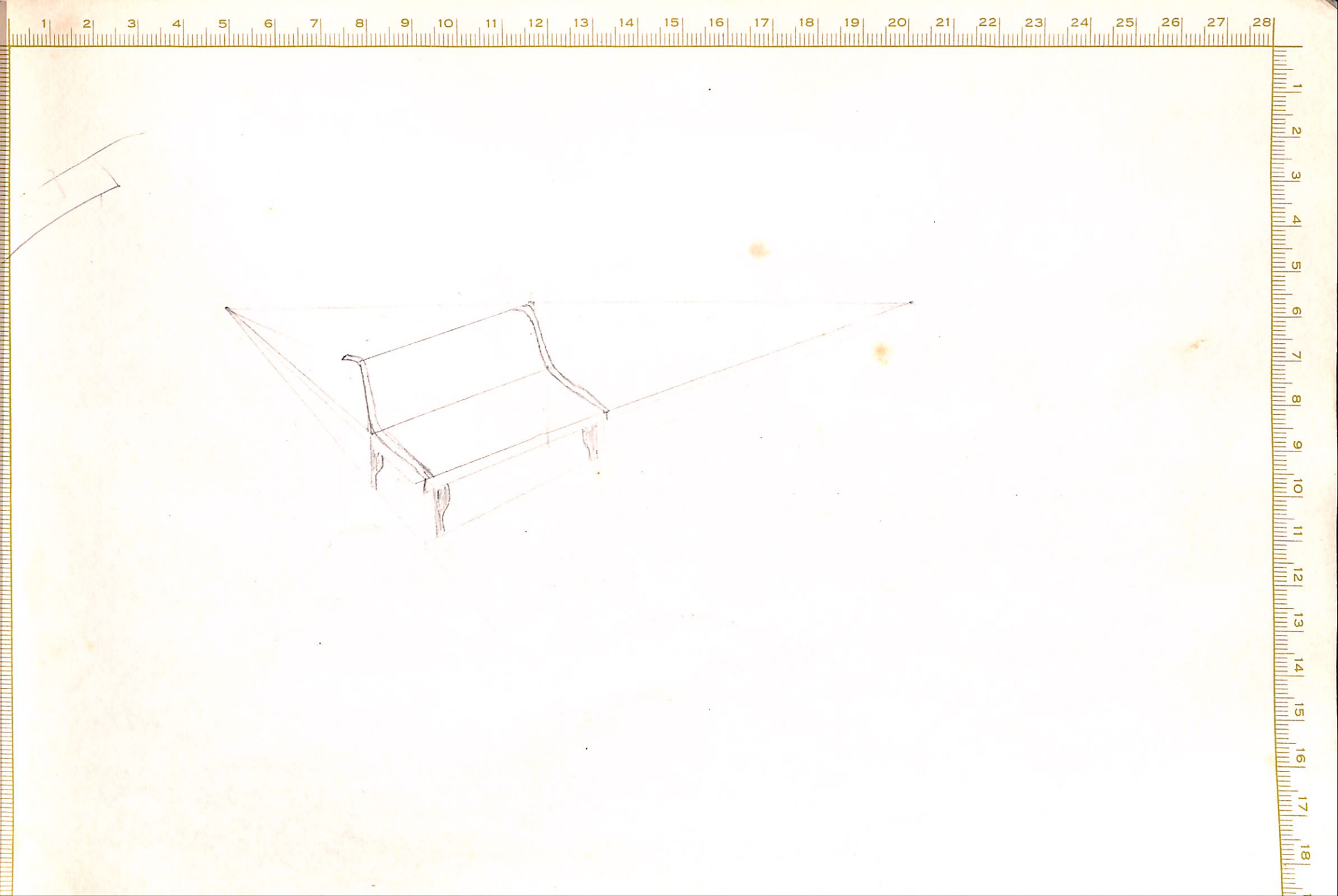














Interior

