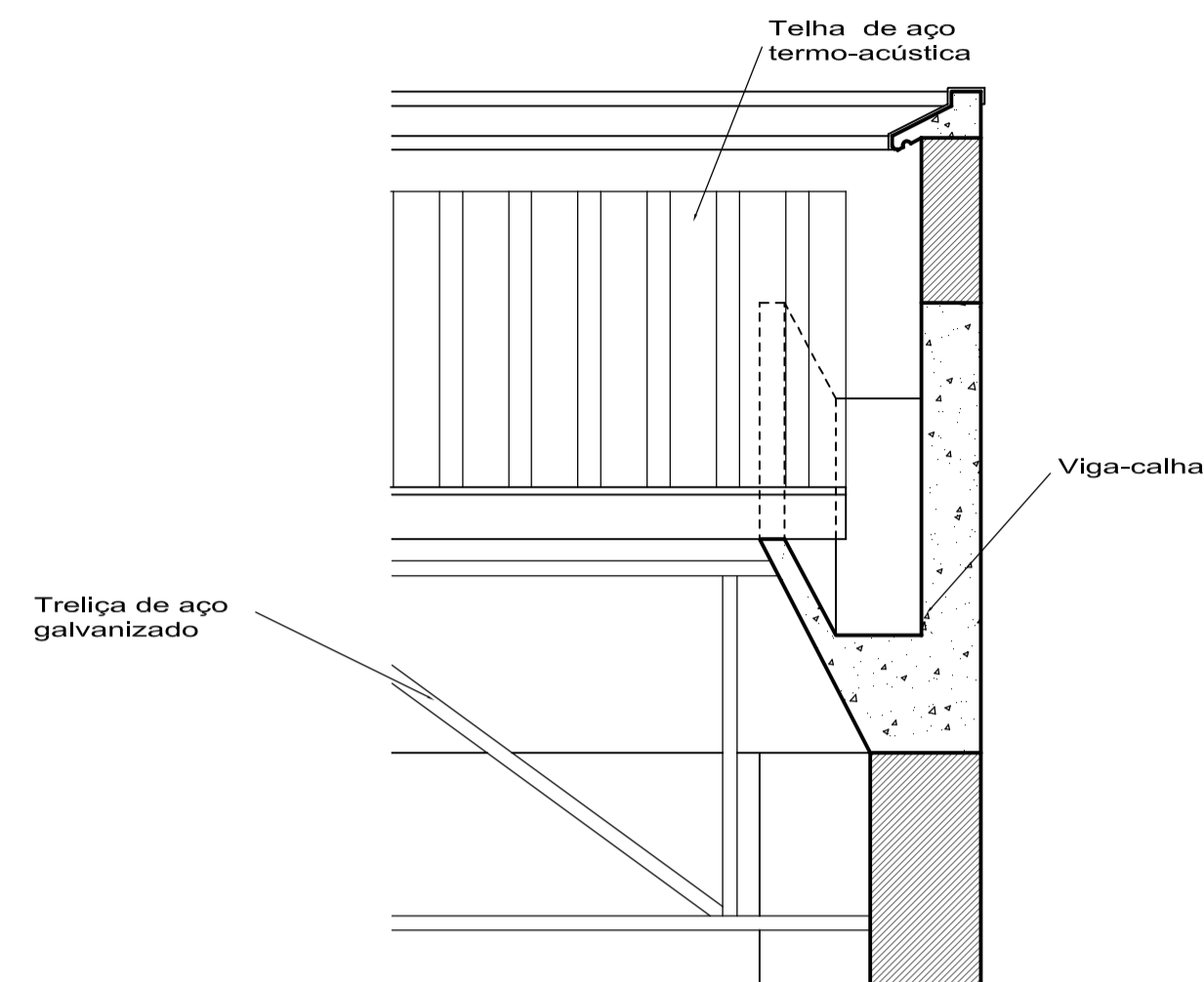
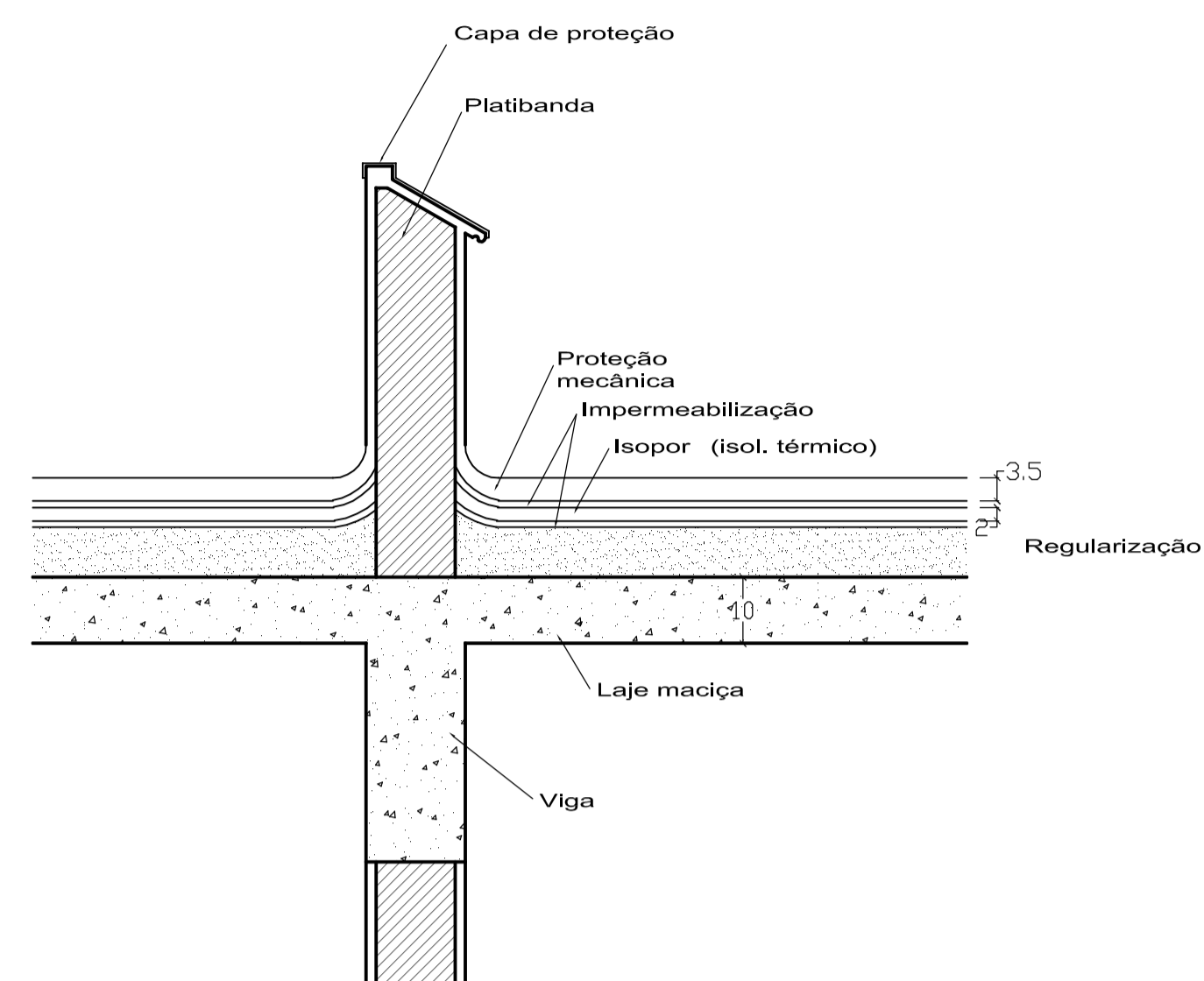


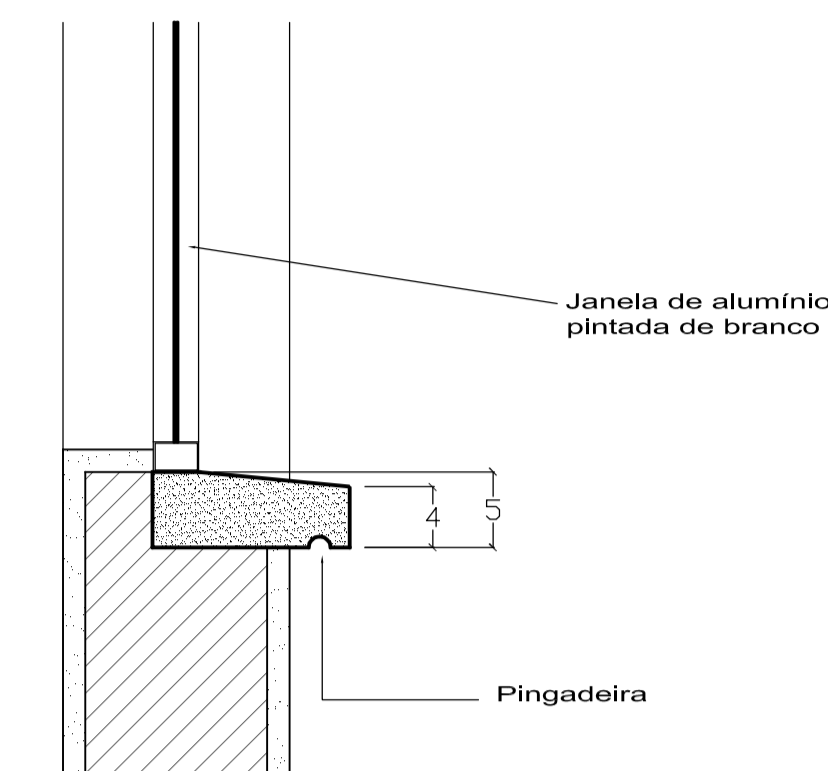
**Detalhe 1**  
Esc: 1/10



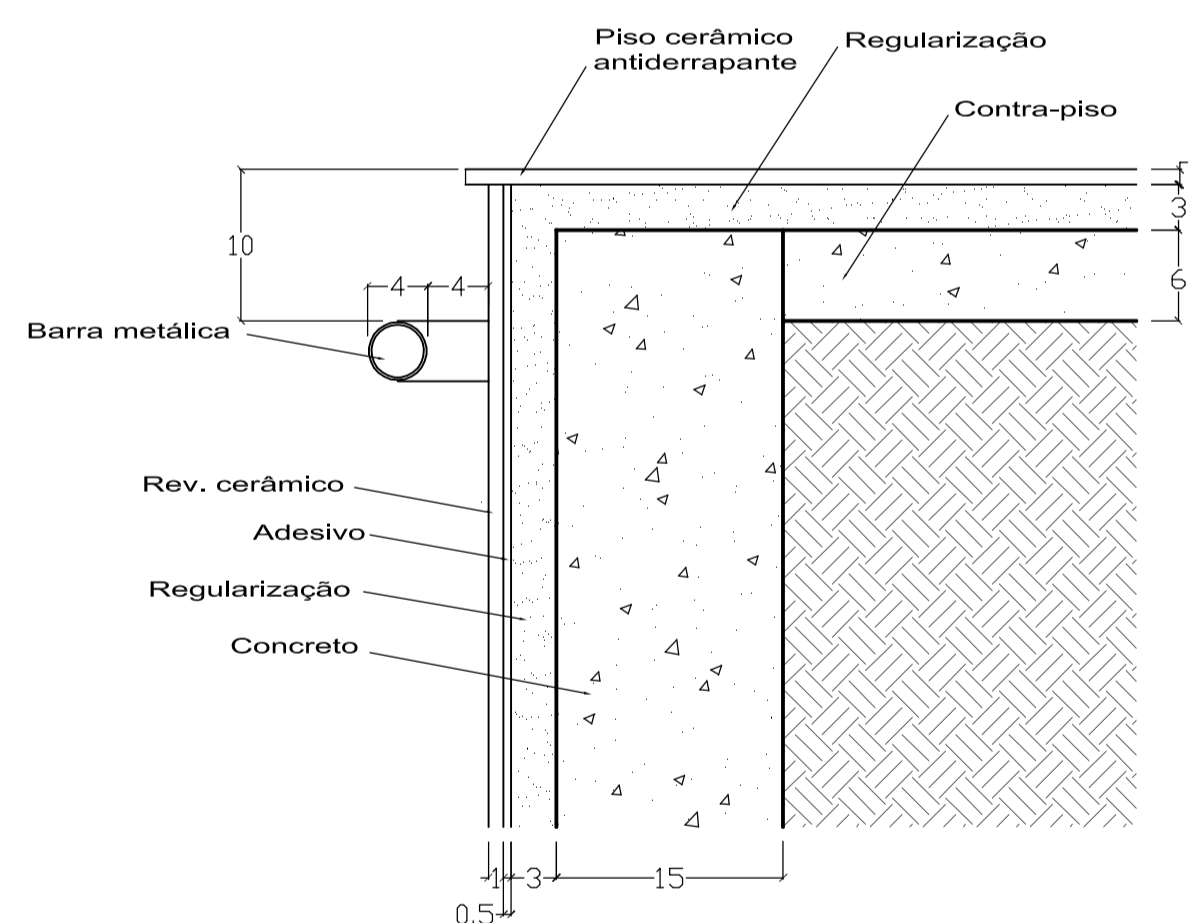
**Detalhe 2**  
Esc: 1/10



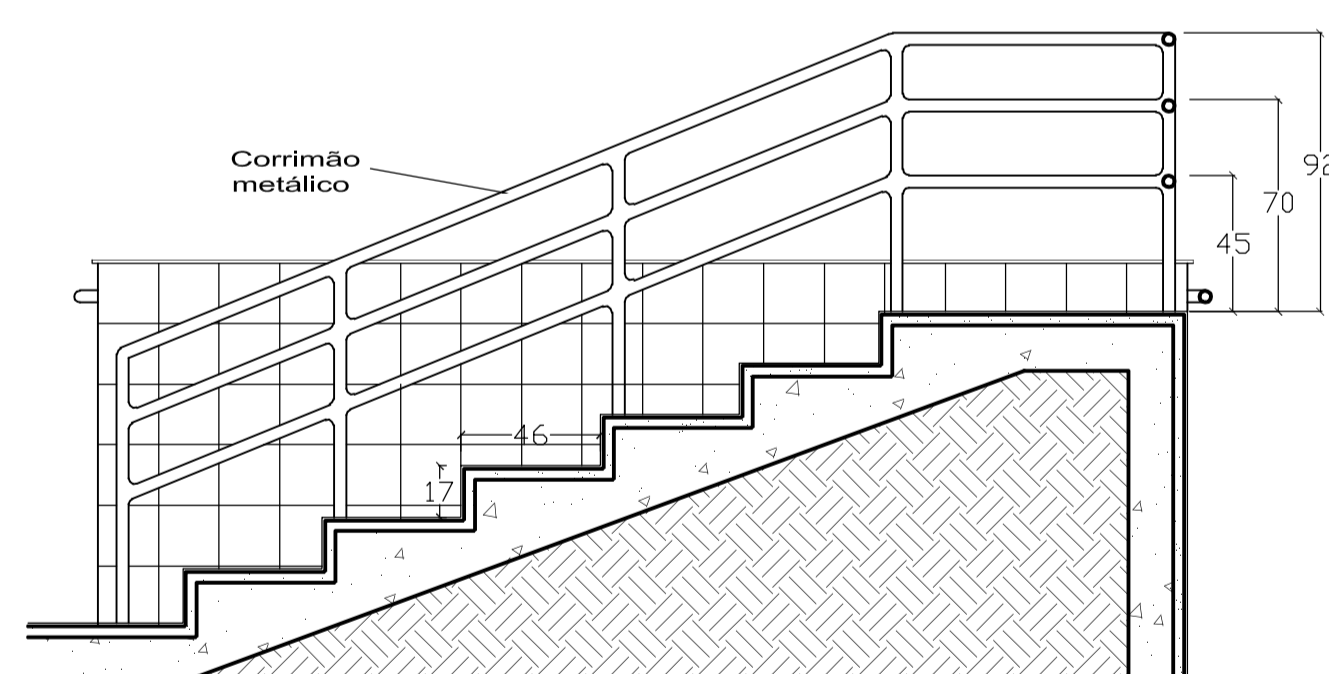
**Detalhe 3**  
Esc: 1/10



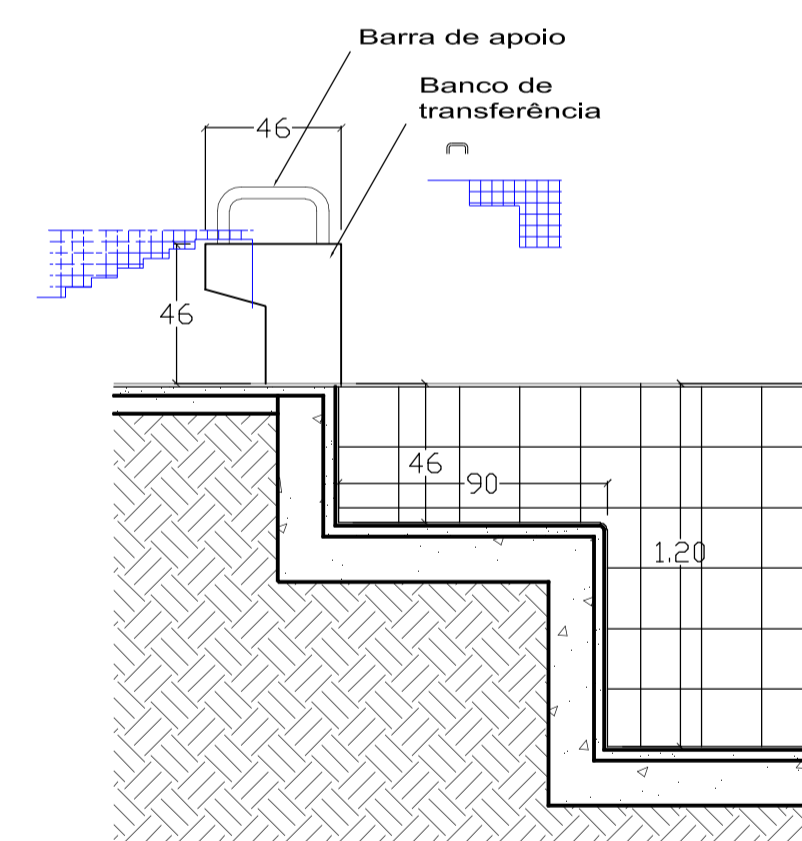
**Detalhe 4**  
Esc: 1/5



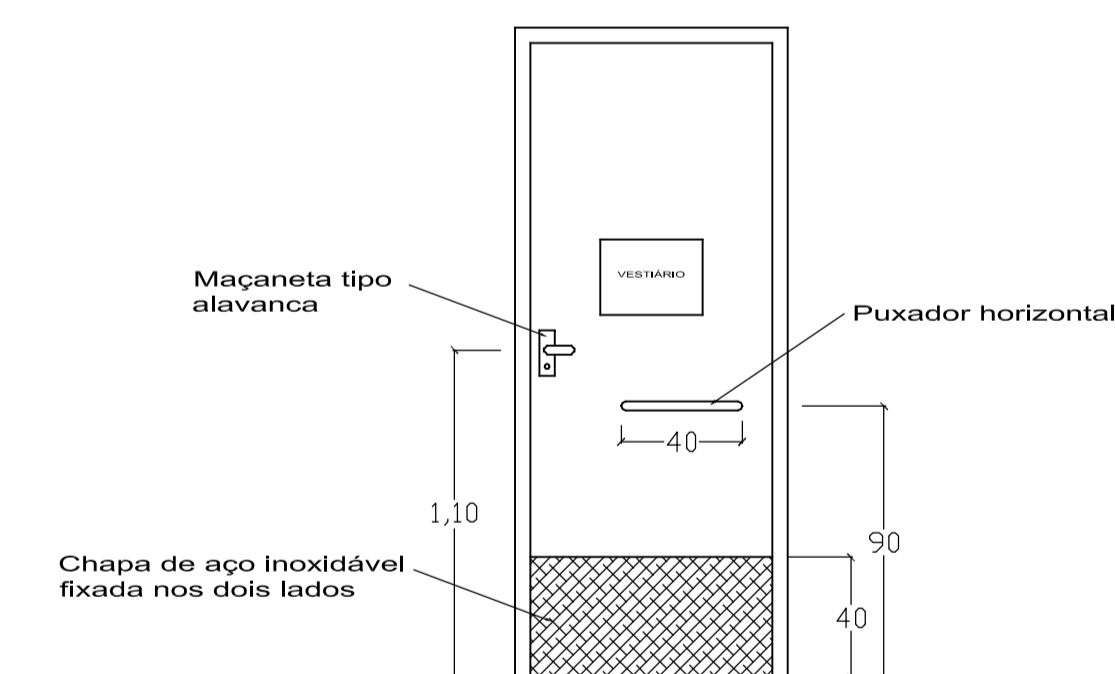
**Detalhe 5**  
Esc: 1/5



**Corrimão Piscina**  
**Detalhe 6**  
Esc: 1/25



**Banco de transferência**  
**Detalhe 7**  
Esc: 1/25



**Porta sanitários e consultórios**  
**Detalhe 8**  
Esc: 1/25



# CENTRO DE REABILITAÇÃO PARA PORTADORES DE MAL DE PARKINSON

UNIVERSIDADE FEDERAL DE SANTA CATARINA  
CTC - DEPARTAMENTO DE ARQUITETURA E URBANISMO  
TRABALHO DE CONCLUSÃO DE CURSO - 2005/1

ACADÊMICA: CHIARA MARIELE GURGACZ  
ORIENTADOR: PROF. WILSON JESUS DA CUNHA SILVEIRA