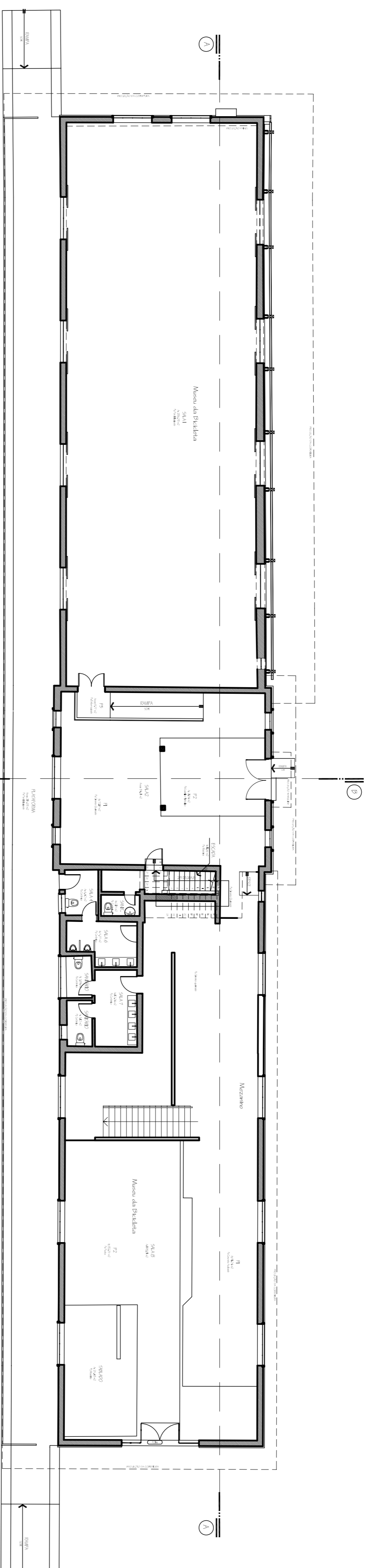
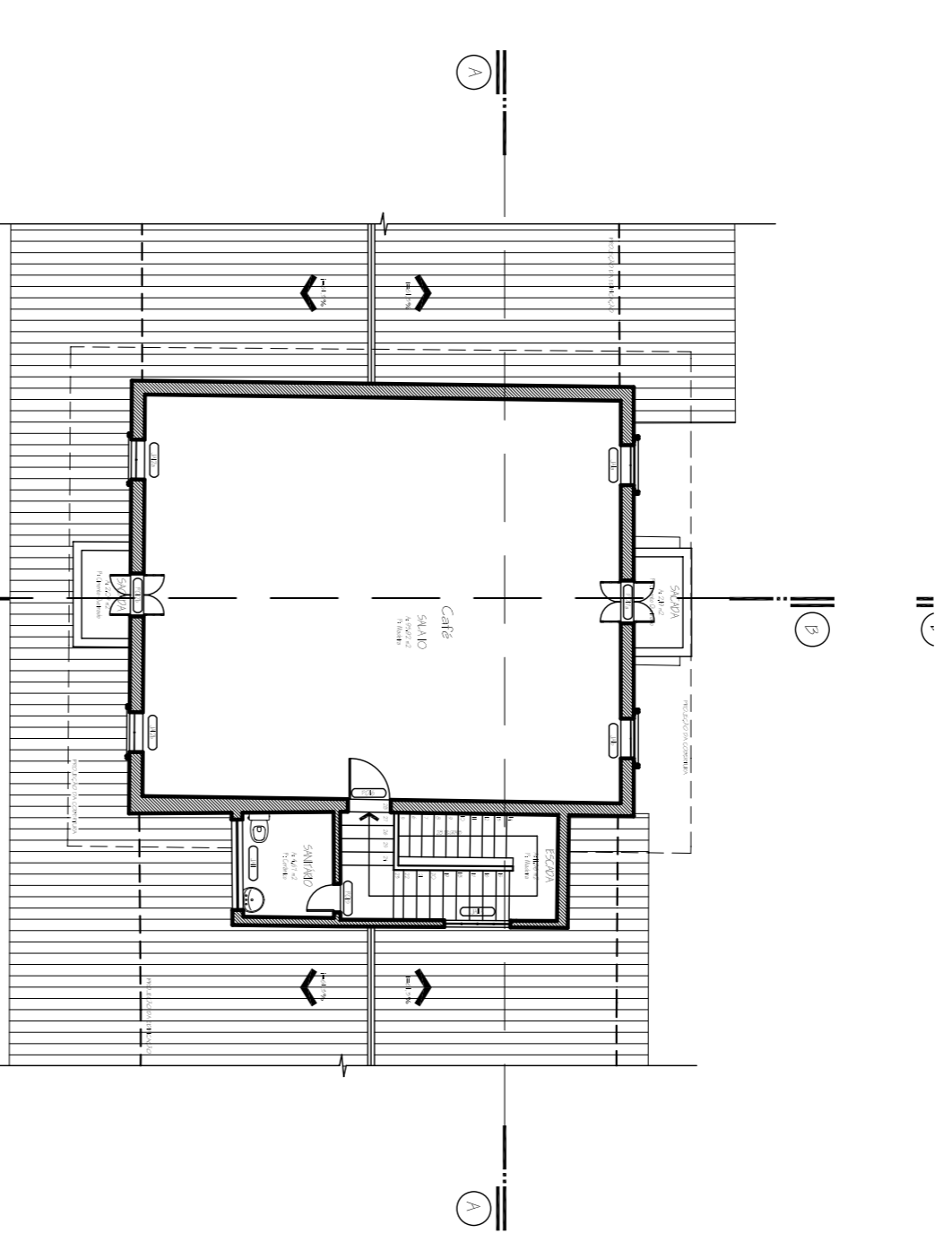


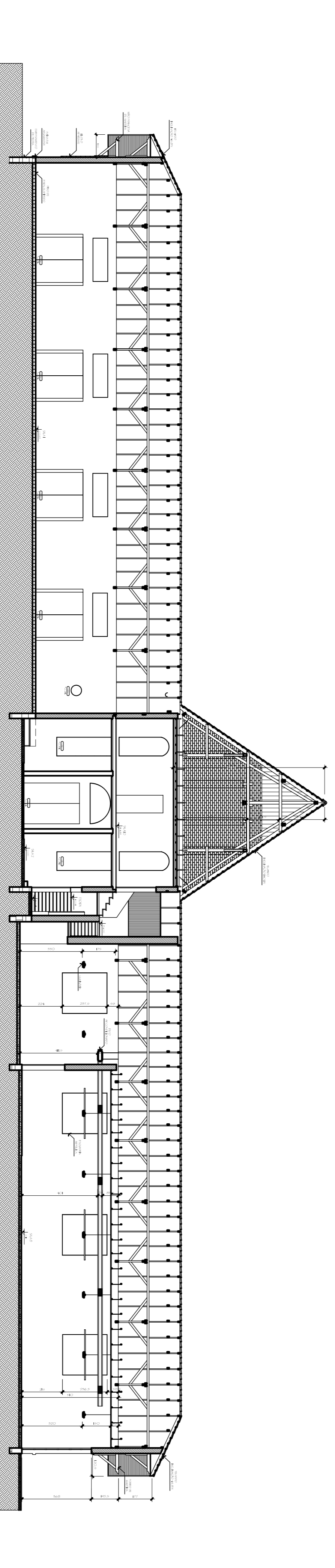
Nos filhos de Joinville: Revitalização e Resgate Histórico Cultural



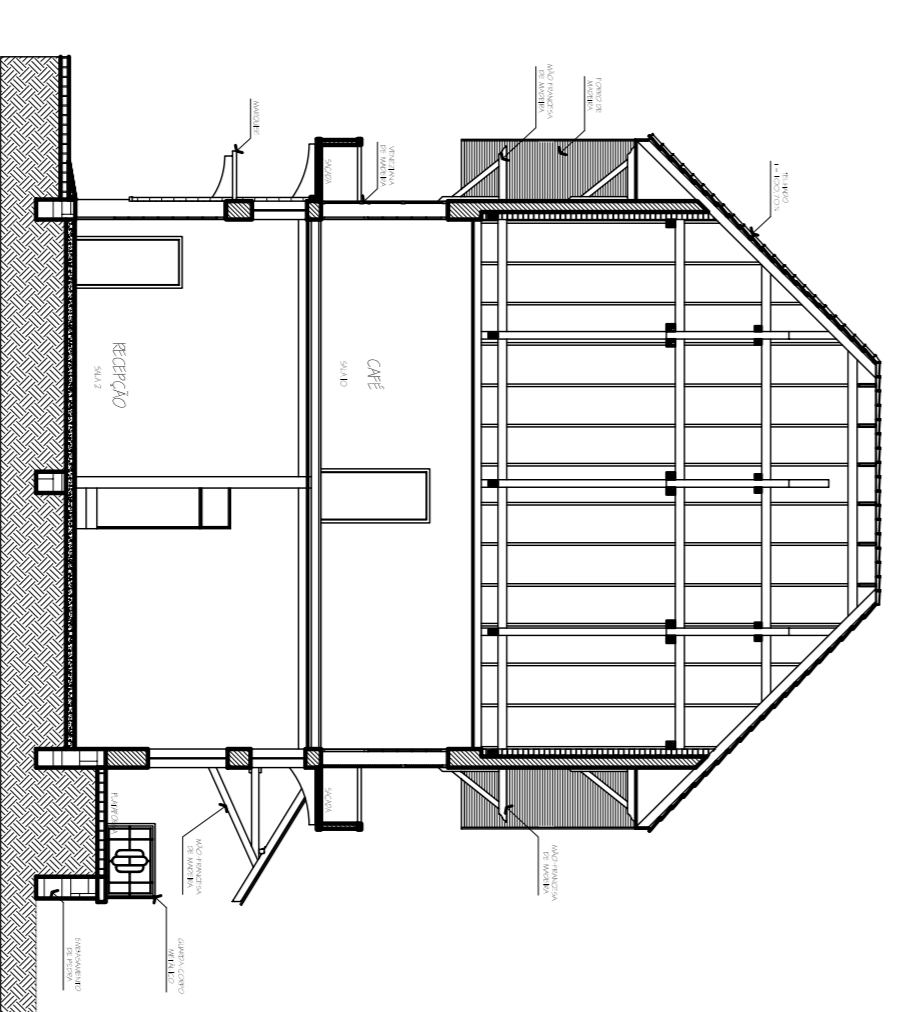
PLANTA BAIXA TERREO MUSEU
1/150



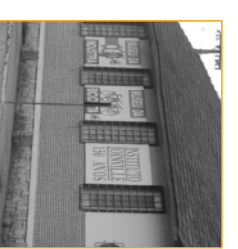
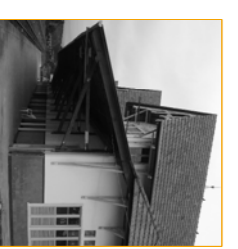
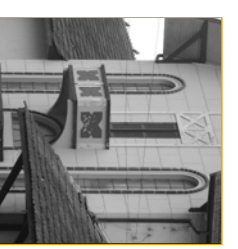
PLANTA BAIXA SUPERIOR MUSEU
1/150



CORTE AA
1/150



CORTE BB
1/150



ORIENTADOR: NELSON POPINI VAZ

TCC. UFSC 2007/02